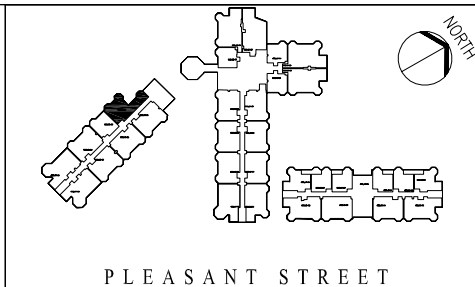


ABBREVIATIONS / SYMBOLS / NOTES

FP FIREPLACE	REF REFRIGERATOR
CL CLOSET	DW DISHWASHER
ENTRY (FRONT DOOR)	SHOWER ONLY
WINDOW	CABINETS/SHELVES



UNIT INFORMATION

ADDRESS: 173 Pleasant Street
 UNIT NUMBER: 308
 LEVEL: 3RD Floor
 SQUARE FEET: 995

1. THIS FLOOR PLAN IS AN APPROXIMATE REPRESENTATION; YOUR UNIT MAY VARY.
2. NOT RESPONSIBLE FOR OMISSIONS OR ERRORS.
3. SEE UNIT DETAIL SHEET FOR ADDITIONAL INFORMATION.
4. NOT ALL FIREPLACES ARE IN WORKING CONDITION; REFER TO UNIT DETAIL SHEET.
5. UNIT SQUARE FOOTAGE INCLUDES ALL CLOSETS.



Pleasant Street Leasehold Condominiums
 Cambridge, MA 02139

UNIT SIZE 2 BEDROOM	DRAWING DATE 08/31/04	YARD/ UNIT NUMBER 53855_173-308
------------------------	--------------------------	------------------------------------